

Calibrated MXF QuickStat – Manual

Please read the entire ReadMe and Software License Agreement before installation and/or use. By installing and/or using this software you are agreeing to the Software License Agreement.

Contents

1. Introduction
2. Windows Location
3. OSX Installation/Location
4. Windows Use
5. OSX Use
6. MXF QuickStat Interface
7. Windows Requirements
8. OSX Requirements
9. Licensing

Introduction

Calibrated MXF QuickStat is a standalone application that lets you conveniently view the video, audio, timecode, and metadata properties of MXF Files.

Panasonic P2 MXF Files (*XML MetaData Indexed with Video Files*):

AVC-Intra
DVCProHD
DV50
DV25

Sony XDCAM:

XDCAM HD (35Mb and 25Mb)
XDCAM EX (converted via Sony Clip Browser)
XDCAM HD 422 (50Mb)
IMX
DV25

Avid (from Media Composer 3.1)

DNxHD
DVCProHD
1-1
1-1-10b
DV50
DV25
Meridien

Ikegami GFCam (*XML MetaData Indexed with Video Files*):

I-Frame MPEG2 100Mb 1080/720
Long-GOP MPEG2 50Mb 1080/720
I-Frame MPEG2 50/40/30Mb SD

Thomson/Grass Valley K2 Media Server

Long-GOP MPEG2 50Mb 1080/720
Long-GOP MPEG2 35Mb 1080/720

Grass Valley, Matrox, Cinegy, Quantel, and many others...

Windows Location

After running the Calibrated{Q} MXF installer, the application will be found here:

[System Drive]\Program Files\Calibrated\Applications\Stats\CalibratedMXFQStat.exe

OSX Installation/Location

Calibrated MXF QuickStat comes as either a separate download or included with the Calibrated{Q} MXF Import DMG. Users must manually install and place the application anywhere they choose too.

Windows Use

Calibrated MXF QuickStat is the default application associated with MXF Files upon install (Windows). Users can change the default application for MXF files very easily by right-clicking on an MXF File and choosing “Open With...” and selecting the desired application.

OSX Use

Users can choose Calibrated MXF QuickStat as the default application for MXF Files. To do so – navigate to a MXF file within Finder and then right-click on the MXF file and choose ‘Get Info’ and then choose Calibrated MXF QuickStat as the default application for the file.

MXF QuickStat Interface

The Calibrated MXF QuickStat Interface is an OpenGL GUI with three pages: ‘format’, ‘metadata’, and ‘about’.

The ‘format’ page is the default page that is displayed when the application is started. This page displays the Video/Audio/Timecode Information for MXF files.

The ‘metadata’ page can be reached by clicking on the word ‘metadata’. This page displays the MetaData for MXF files.

The ‘about’ page can be reached by clicking on the word ‘about’. This page contains the version number of the currently installed Calibrated MXF QuickStat applications as well as options for Calibrated MXF QuickStat.



Format Page

a. Top Buttons

1. **Load** – Manually load a MXF File to examine its properties.
2. **History** – A History bar that stores the last 32 MXF files opened in Calibrated MXF QuickStat. Users can scroll thru this list via the drop down or the left/right arrows.
3. **Launch (Windows Only)** – Launch the MXF File in an external application as defined in the Options page.

b. General – General Information of the MXF file.

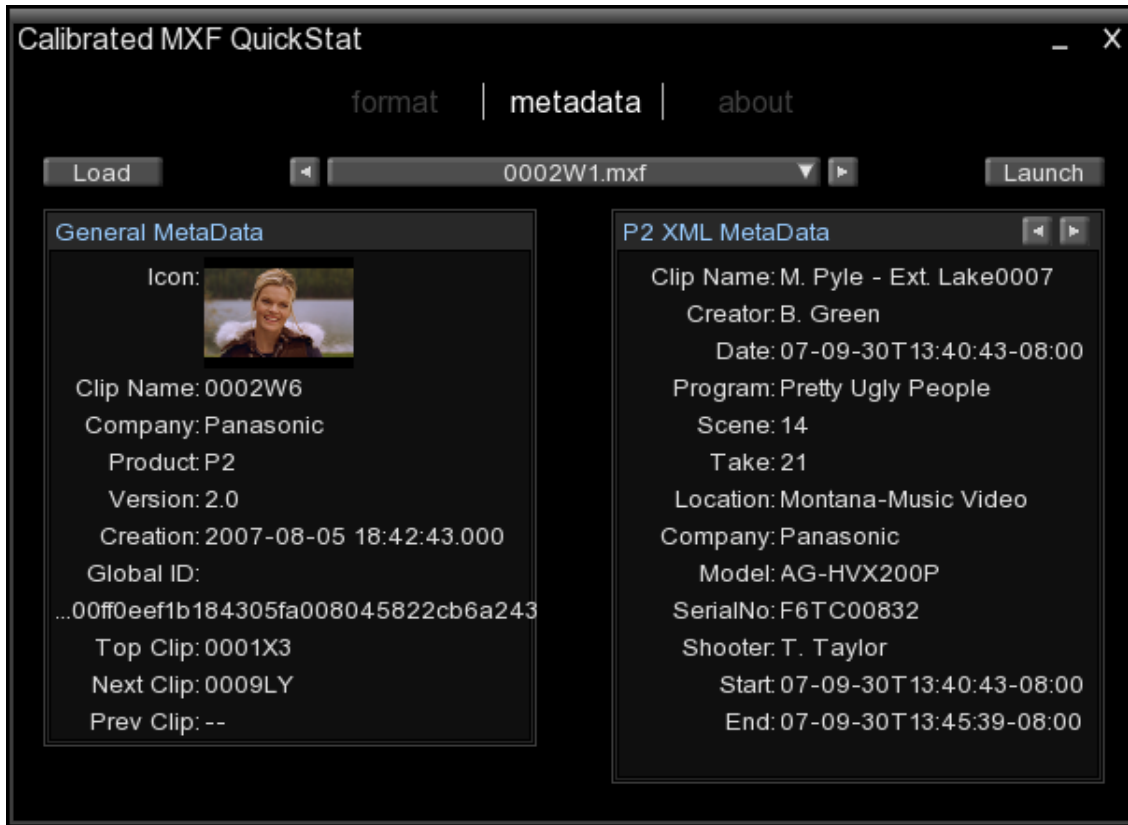
c. Video – Video Information of the MXF file.

d. Audio – Audio Information of the MXF file.

e. TimeCode – TimeCode Information of the MXF file.

(screenshot of metadata page)

4

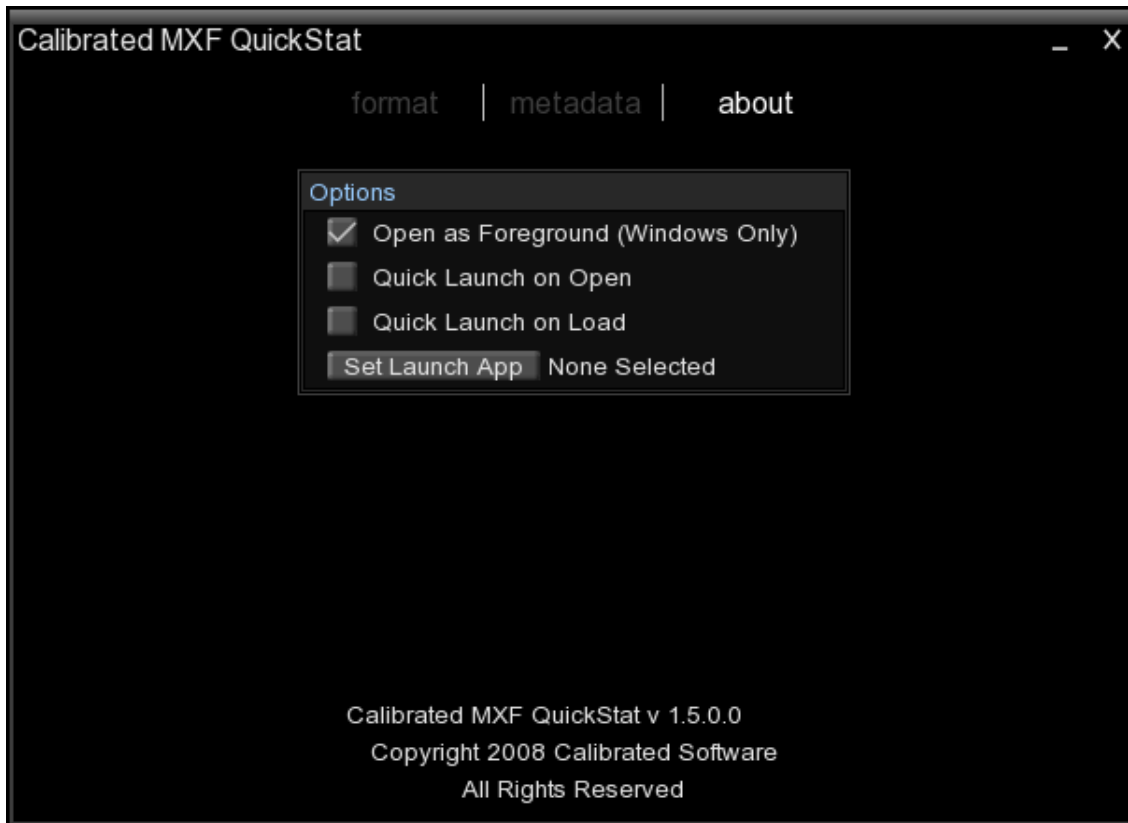


Metadata Page

a. Top Buttons

1. **Load** – Manually load a MXF File to examine its properties.
2. **History** – A History bar that stores the last 32 MXF files opened in Calibrated MXF QuickStat. Users can scroll thru this list via the drop down or the left/right arrows.
3. **Launch (Windows Only)** – Launch the MXF File in an external application as defined in the Options page.

- b. MetaData** – MetaData information of the MXF file. You can use the left/right arrows keys to scroll thru more MetaData.



Options Page

- a. **Open as Foreground (Windows Only)** – If checked, this will automatically make the Calibrated MXF QuickStat application the foreground window when opening a MXF file by clicking on it.
- b. **Quick Launch on Open (Windows Only)** – If checked, this will automatically open the MXF File in the “Launch application” when a user clicks on a MXF file to open it.
- c. **Quick Launch on Load (Windows Only)** – If checked, this will automatically open the MXF File in the “Launch application” when a user uses the “Load” button to open a file in Calibrated MXF QuickStat.
- d. **Set Launch App (Windows Only)** – Users can set an external application to launch a MXF file in when loaded into Calibrated MXF QuickStat.

Windows Requirements

Windows 32-bit Vista (Business or Ultimate) or Windows 32-bit XP with SP2

OSX Requirements

Mac Intel with OSX 10.4.11(Tiger) or 10.5.8(Leopard) or 10.6.1(Snow Leopard)

Licensing

This is a free application; however users agree to the Software License Agreement when using the application.

Portions of this software are copyright © 2007 The FreeType Project (www.freetype.org). All rights reserved.

Portions of this software are copyright:

The OpenGL Extension Wrangler Library

Copyright (C) 2002-2008, Milan Ikits <milan_ikits@ieee.org>

Copyright (C) 2002-2008, Marcelo E. Magallon <mmagallo@debian.org>

Copyright (C) 2002, Lev Povalahev

All rights reserved.

Redistribution and use in source and binary forms, with or without modification, are permitted provided that the following conditions are met:

- * Redistributions of source code must retain the above copyright notice, this list of conditions and the following disclaimer.
- * Redistributions in binary form must reproduce the above copyright notice, this list of conditions and the following disclaimer in the documentation

and/or other materials provided with the distribution.

- * The name of the author may be used to endorse or promote products derived from this software without specific prior written permission.

THIS SOFTWARE IS PROVIDED BY THE COPYRIGHT HOLDERS AND CONTRIBUTORS "AS IS" AND ANY EXPRESS OR IMPLIED WARRANTIES, INCLUDING, BUT NOT LIMITED TO, THE IMPLIED WARRANTIES OF MERCHANTABILITY AND FITNESS FOR A PARTICULAR PURPOSE ARE DISCLAIMED. IN NO EVENT SHALL THE COPYRIGHT OWNER OR CONTRIBUTORS BE LIABLE FOR ANY DIRECT, INDIRECT, INCIDENTAL, SPECIAL, EXEMPLARY, OR CONSEQUENTIAL DAMAGES (INCLUDING, BUT NOT LIMITED TO, PROCUREMENT OF SUBSTITUTE GOODS OR SERVICES; LOSS OF USE, DATA, OR PROFITS; OR BUSINESS INTERRUPTION) HOWEVER CAUSED AND ON ANY THEORY OF LIABILITY, WHETHER IN CONTRACT, STRICT LIABILITY, OR TORT (INCLUDING NEGLIGENCE OR OTHERWISE) ARISING IN ANY WAY OUT OF THE USE OF THIS SOFTWARE, EVEN IF ADVISED OF THE POSSIBILITY OF SUCH DAMAGE.

Copyright 2008 Calibrated Software, Inc. All rights reserved.

Calibrated{Q} and Calibrated MXF QuickStat is a trademark of Calibrated Software, Inc

All other company and product names are copyrights of their respective companies.

